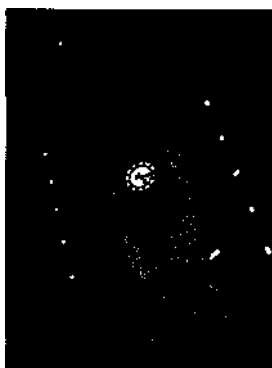


London

Steve Fallon



LONELY PLANET PUBLICATIONS
Melbourne • Oakland • London • Paris

Contents - Text

THE AUTHOR	4
THIS BOOK	5
FOREWORD	6
INTRODUCTION	7
FACTS ABOUT LONDON	9
History.....	9
Geography.....	25
Geology.....	26
Climate.....	26
Ecology & Environment.....	26
Flora & Fauna.....	27
Government & Politics ..	29
Economy.....	31
Population & People ..	32
Education.....	32
Science & Philosophy.....	33
Arts.....	34
Society & Conduct.....	46
Religion.....	48
Language.....	48
THE RIVER THAMES	50
FACTS FOR THE VISITOR	57
When to Go.....	57
Orientation.....	57
Maps.....	57
Responsible Tourism.....	59
Tourist Offices.....	59
Travel Agencies.....	61
Visas & Documents.....	61
Embassies & Consulates.....	64
Customs.....	65
Money.....	66
Post & Communications.....	70
Digital Resources.....	74
Books.....	75
Newspapers & Magazines ..	76
Radio & TV.....	77
Video Systems.....	79
Photography & Video ..	79
Time.....	79
Electricity.....	79
Weights & Measures	79
Laundry.....	79
Toilets.....	80
Left Luggage.....	80
Health.....	80
Women Travellers.....	82
Gay & Lesbian Travellers ..	82
Disabled Travellers.....	83
Senior Travellers.....	84
London for Children.....	84
Useful Organisations	85
Libraries.....	85
Universities.....	86
Cultural Centres.....	86
Dangers & Annoyances	87
Emergencies.....	87
Legal Matters.....	89
Business Hours.....	89
Public Holidays & Special Events.....	89
Doing Business.....	91
Work.....	92
GETTING THERE & AWAY	94
Air... ..	94
Bus	97
Train	97
Car & Motorcycle.....	101
Bicycle.....	102
Hitching.....	102
Boat.....	102
Walking.....	104
Organised Tours.....	104
GETTING AROUND	106
The Airports.....	106
London Underground.....	109
Bus.....	112
DLR & Train.....	113
Car & Motorcycle.....	114
Taxi.....	116
Bicycle... ..	117
Walking.....	118
Boat.....	118
LONDON'S CONTEMPORARY ARCHITECTURE	124
THINGS TO SEE & DO	130
Suggested Itineraries.....	130
Central London.....	131
Trafalgar Square.....	131
Westminster & Pimlico.....	134
St James's & Mayfair.....	142

2 Contents - Text

The West End: Piccadilly to Soho & Covent Garden146	St John's Wood & Maida Vale..... 209	Blackheath.....228
Bloomsbury.....154	Euston & King's Cross..... 210	Dulwich & Forest Hill.....231
Holborn & Clerkenwell.....159	Islington & Stoke Newington.....212	Brixton.....231
The City.....162	Camden & Kentish Town.....212	Wandsworth.....232
South of The Thames:	Hampstead & Highgate..... 213	Wimbledon.....232
Bermondsey to Battersea ..182	Muswell Hill.....215	West London.....233
Chelsea, South Kensington & Earls Court.....195	Neasden.....216	Hammersmith & Fulham ...233
Knightsbridge, Kensington & Holland Park.....201	Walthamstow.....216	Chiswick.....234
Notting Hill & Bayswater204	East London.....217	Kew.....234
Hyde Park Area.....204	East End.....217	Richmond & Twickenham...236
Marylebone & Regent's Park.....206	The Docklands.....220	Hampton.....237
North London.....209	South London.....224	Isleworth, Brentford & Ealing.....240
	Greenwich.....224	Other Attractions.....241
	Around Greenwich.....228	Activities.....243
		Courses.....246

PLACES TO STAY

Budget.....248	Top End.....260	Long-Term Rentals.....268
Mid-Range.....257	Deluxe.....264	

PLACES TO EAT

Food.....269	Bermondsey.....283	Euston.....293
Drinks.....271	Southwark.....284	Camden, Kentish Town & Highgate.....293
Trafalgar Square.....271	Waterloo & Lambeth.....284	Islington.....294
Westminster & Pimlico ..271	Battersea.....286	Stoke Newington, Finsbury Park & Dalston.....296
St James's & Mayfair.....273	Clapham, Wandsworth & Putney.....286	Hampstead.....296
The West End: Piccadilly, Soho & Chinatown.....273	Chelsea, South Kensington & Earls Court.....287	East End & The Docklands ..297
Covent Garden & The Strand.....278	Kensington & Knightsbridge.....289	Brixton.....299
Fitzrovia & Marylebone ..279	Notting Hill, Bayswater & Paddington.....290	Hammersmith & Fulham ...300
Bloomsbury.....280	Maida Vale.....292	Chiswick.....301
Holborn & Clerkenwell...281		Kew.....302
The City.....282		Richmond.....302

ENTERTAINMENT

Listings.....303	Rock & Pop.....317	Theatre.....321
Pubs & Bars.....303	Jazz.....318	Opera.....324
Clubs.....313	Folk & World Music.....319	Ballets. Dance.....324
Gay & Lesbian Venues.....315	Classical Music.....319	Organised Entertainment325
Comedy.....317	Cinemas.....320	Spectator Sports.....326

SHOPPING

What to Buy.....328	Where to Shop.....335	328
---------------------	-----------------------	------------

THE MARKETS OF LONDON

340

EXCURSIONS

346

Organised Tours.....346	Cambridge.....351	Brighton.....357
Oxford.....348	Canterbury.....354	Windsor.....359

Leeds Castle.....	362	Down House.....	363	Chartwell.....	363
Hever Castle.....	362	Knole House.....	363		

INDEX **371^**

Text.....	371	Places to Stay.....	378
Boxed Text.....	380	Places to Eat.....	378

MAP SECTION **383**

MAP LEGEND **back page**

METRIC CONVERSION **inside back cover**